



BROCHURE

Soluciones eléctricas de alto rendimiento para industrias que exigen calidad, seguridad y continuidad.

CONTACTO

+51 903 411 263 

raisa-energy.com 

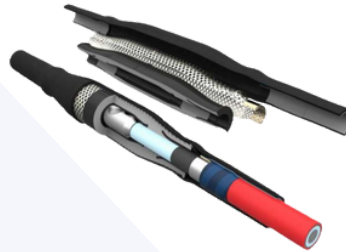
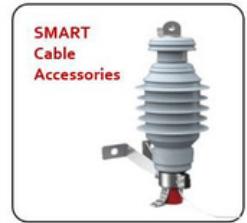
ralcazar@raisa-energy.com 



Accesorios de cables de baja y media tensión de la fábrica REPL ITALIA

REPL – líder mundial en el desarrollo continuo de nuevos productos y fabricación de Accesorios de Cables de tecnología termocontraíbles, contracción en frío, premoldeados y Smart, de alta calidad, para cables de Media y Baja tensión, con sede principal en UK. Dentro de las principales soluciones de productos se tiene:

- Terminaciones de BT y MT
- Empalmes de BT y MT
- Conectores codos para conexión con celdas
- Terminaciones SMART
- Tubos y Cintas
- Mantas para reparación de chaquetas
- Capuchones
- Botas separadoras
- Pararrayos
- Conectores mecánicos rectos y terminal
- Conectores perforables
- Productos Avifauna para protección de activos de subestaciones, líneas y de protección de Personas.



Over 35years of continued product development:



Since 1982 , REPL has become a leading supplier of heat shrink tubing and moulded components



Using our expertise , we offer joints and terminations using our heat shrink products



Silicon rubber pre-moulded joints and terminations



Elastomeric Cold Shrink joints and terminations



REPL develop SMART termination



Screened Plug in terminations , including SMART types

Herramientas de pelados de cables de baja y media tensión







HERRAMIENTAS PELACABLES

 PELACABLES PARA AISLAMIENTO EXTERIOR	 PELACABLES PARA SEMICONDUCTORES	 PELACABLES PARA AISLAMIENTO PRIMARIO
 <p>AB16 (0,03 - 16 mm²)</p> <p>PTS4 (0,2 - 6 mm²)</p> <p>AV8203 (1,5 - 35 mm²)</p>	 <p>FBS 17220 (Ø 10 - 52 mm vulcanizado)</p>	 <p>IMS 20kV AV6310 (25 - 240 mm²)</p>
 <p>ABI1 (Ø 4,5 - 29 mm)</p>	 <p>FBS II (Ø 16 - 58 mm vulcanizado) 17250 (17°) 17252 (8°)</p>	 <p>AV63300 (300 mm²), AV63400 (400 mm²)</p>
 <p>AMS* AV6220 (Ø > 25 mm)</p>	 <p>HLS AV6400 (Ø 16 - 41 mm no vulcanizado)</p>	 <p>IMS II 17230 (Ø 15 - 52 mm)</p>
 <p>AMX 17300 (Ø 16 - 54 mm)</p>		 <p>IMS III 17260 (Ø 15 - 58 mm)</p>
 <p>AIS 17190 (Ø 16 - 54 mm)</p>		 <p>UFS 17240 (Ø 15 - 60 mm)</p>

Herramientas para instalación/desinstalación de cuña para conectores cuña tipo Ampact o similares

Aplicador de Conector de Cuña



Una herramienta innovadora para la aplicación de conectores tipo cuña. De aplicación ligera, es accionada por una llave de impacto de 1/2", requiriendo el mínimo esfuerzo del operador y proporcionando una mejor ergonomía de trabajo.



SEGURIDAD
Evita disparos accidentales



CONTROL
Para una conexión de calidad



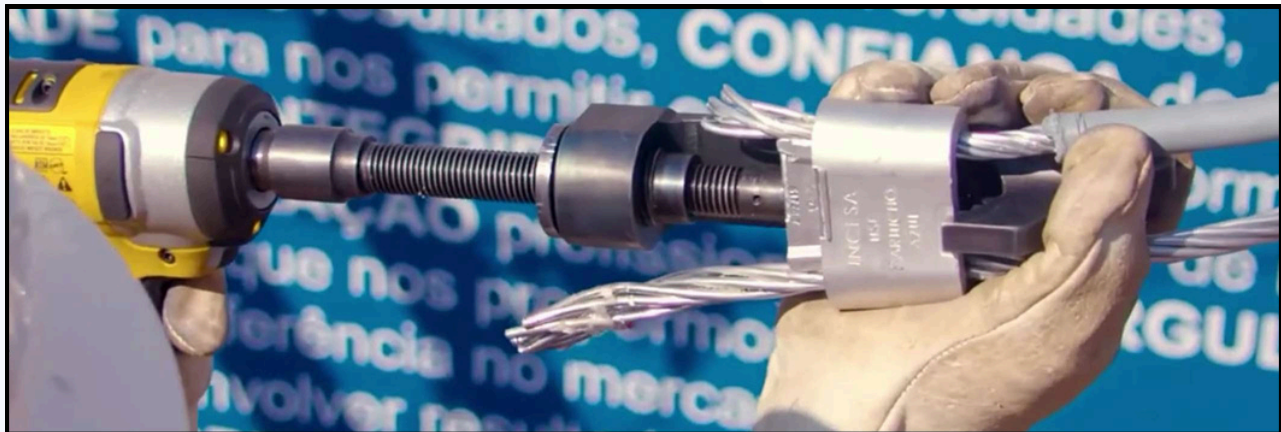
PRACTICIDAD
En la aplicación y remoción de conectores



AGILIDAD
Al aplicar o remover



COSTO-BENEFICIO
Elimina el uso de cartucho





Particulars	Porcelain Bushing	Polymer Bushing
MCOV	7.8 – 420 kV	0.5-420 kV
Maximum System Voltage	12 – 420 kV	0.5-420 kV
Discharge Current	5, 10, 20 kA	5,10,20 kA
Class	I,II,III,IV	I,II,III,IV
Energy Absorption Capability	2-12 kJ/kV	2-12 kJ/kV
Short Circuit (Pressure Relief)	63 kA	63 kA
Type	Distribution type, Station type	Distribution type, Station type
Design	Design A	Design A & B Warp/ Cage/ Tube

Disconnectors/Air Break Switches



Particulars	Center Break	Double Break	Earth Switch	Air Break Switch
Maximum System Voltage	33-420 kV	11-420 kV	11-420 kV	11-36 kV
Rated Current	100-4000 A	100-4000 A	100-4000 A	200-800 A
Mounting Options	Horizontal, Underhung	Horizontal, Vertical, Underhung	Horizontal	Horizontal, Vertical
Earth Switch	Single, Double	Single, Double	n/a	n/a
Short-time withstand	Upto 40 kA/3s	Upto 50 kA/1s	Upto 50 kA/1s	Upto 31.5 kA/3s
Special Purpose*	Tandem arrangement	Tandem arrangement, Double isolator	Tandem arrangement,	Arc Chutes, Arc Chambers
Galvanized Structures	Yes (Pipe type, Angle type)	Yes (Pipe type, Angle type)	Yes (Pipe type, Angle type)	Yes (Pipe type, Angle type)

Load Break Switch (Outdoor)

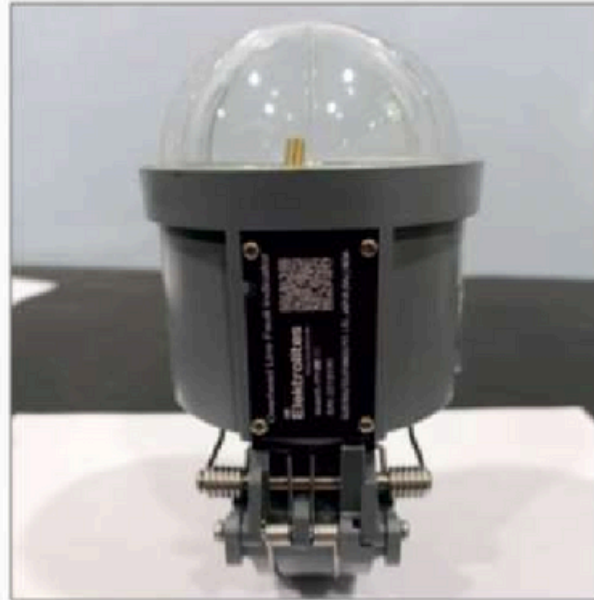


Features

- ▶ SCADA ready
- ▶ SF6 free air break technology
- ▶ Arching Chamber for full load operation
- ▶ Seamless integration with existing SCADA networks
- ▶ DNP3.0, IEC 60870-5-101, 103 and 104 supported
- ▶ Battery backup for continuous operation
- ▶ Suitable for single pole mounting
- ▶ Factory assembled and aligned

Parameter	Values (11 kV)	Values (33 kV)
Rated voltage / Highest system voltage	11 / 12 kV	33 / 36 kV
Rated normal current	630-1250 A	630-1600A
Applicable standard	IEC 62271-103	IEC 62271-103
1 min power frequency (Across / Ph-Grnd)	28 / 35 kV	80 / 70 kV
Impulse voltage (1.2/50 us) (Across / Ph-Grnd)	75 / 85 kV	195 / 170 kV
Rated frequency	50 / 60 Hz	50 / 60 Hz
Rated short-time withstand current	16 kA for 3 seconds	16 kA for 3 seconds
Mainly active load breaking current	630 A	630 A
Operating mechanism	Motor & Manual	Motor & Manual

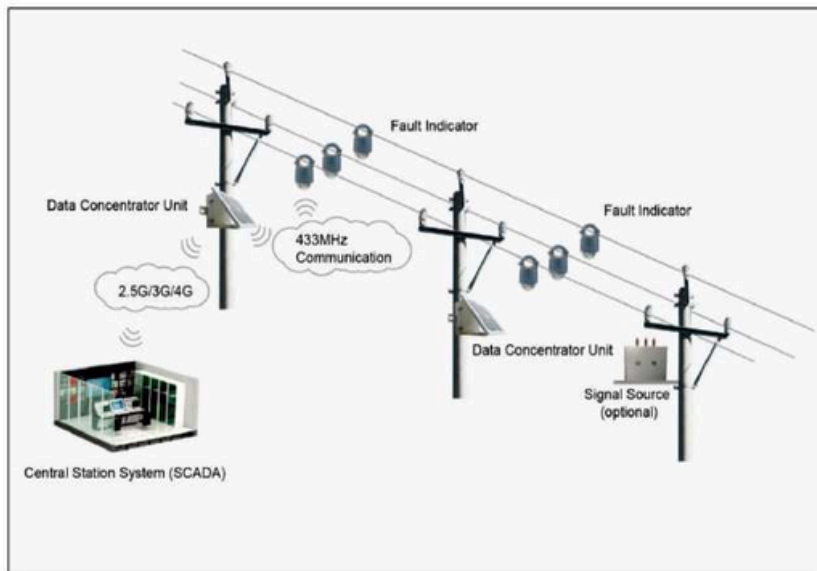
Fault Passage Indicator/Fault Locator



Features

- ▶ Self-adaptation adjusts to the network voltage and frequency.
- ▶ Remote Configured from the DCU and Handheld Device at the pole bottom.
- ▶ Detects and transmits earth fault (di/dt algorithm), short circuits and voltage loss.
- ▶ Fault are confirmed by the loss of voltage after the upstream protection device has tripped
- ▶ Permanent fault indication is automatically cleared when voltage returns to the MV line of following a time delay.

Architecture



Accessories

- Power Supply – Solar & Potential Transformer (Optional)
- Mounting & Dismounting Tool with Hot stick
- Handheld Device for Configuration
- SCADA communication (Optional)

Autorecloser & Sectionalizer (Upto 33kV)



Rating	Features	Protection & Control	Communication/ SCADA
Current In: 630/800 A	Solid Dielectric	Under & Over Voltage Relay	DNP3, IEC 60870-5-101/104
Voltage Level: 15.5/27/38	Vacuum Interruption	High Z fault Detection	IP Stainless Steel Enclosure
Altitude: up to 3000m	Oil & SF6 Free	Broken Conductor	Best in Class Remote Control
Ambient Temp: - 40°C to +55°C	Arc Fault Venting	Fault Locator & Power Quality	SCADA
Withstand: 12.5/16KA/3 sec	Fully Bidirectional Operation	Interlocking Relay	MQTT
Mechanical Load: 30,000 Nos.	Stainless Steel Construction	Automatic Back Feed restoration	Android Application
	Built-in CT & CVTs	Cold Load pickup	Secure Wireless Remote Control

Line Lightning Protection Device (LLPD)

For Medium Voltage



Introduction

A unique lightning solution for overhead lines: Line Lightning Protection Devices (LLPDs) with Easy Quench (EQ) technology have been invented and patented by Our Partner.

The Technology protect overhead lines against direct and indirect lightning strikes, thus helping to prevent breakage of conductors, insulators and power outages. Due to their operating principle, line lightning protection devices (LLPDs) do not require any special grounding (e.g., a ground lead).

Benefits

- ▶ Prevents outages on the line
- ▶ Protects overhead lines from direct lightning strike and induced overvoltage
- ▶ No dedicated grounding to be arranged
- ▶ No maintenance required
- ▶ Works perfectly in areas with high soil resistivity
- ▶ Works under extreme climatic conditions and high-altitude landscape
- ▶ One time investment, 20 years life expectancy & fix and forget

Possible Consequences (of Flow Current & Lightning Over Voltage Propagation)

- ▶ Failure of the transformer by mechanical stress and temperature rise
- ▶ Outages and trips
- ▶ Conductor breakage (in particular covered conductors)
- ▶ Metal oxide arrester breakage
- ▶ Failure of the transformer due to insulation failure

Technical Parameter

Voltage	Up to 69 kV
External air gap	40 – 180 mm
Average Expected lifespan	30 Years
Weight	1.1 – 6.2 kV
Maintenance	1 Visual Verification/year

Sistema Inteligente de Protección contra Rayos



Sistema de Puesta a Tierra



Soldaduras Exotermicas



Conectores y Terminales a Compresión, Otros



Conectores mecánicos, conectores tipo cuña, tipo C, tipo H



Cable Glands & Accessories




Abrazaderas para sujeción de cables – Cable Cleats



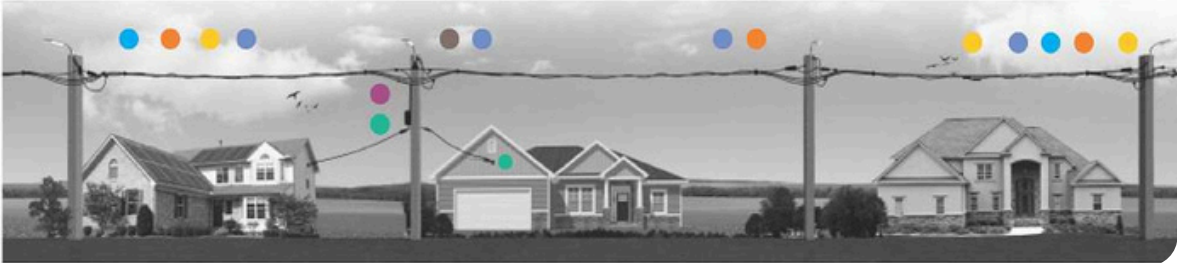
Flejes y hebillas de acero inoxidable



Aerial Bundled Conductor (ABC) Solutions



● Anchoring Brackets & Clamps
 ● Service Clamps
 ● Suspension Clamps
 ● Distribution Boxes
 ● Insulation Piercing Connectors (IPC)
 ● Other Accessories



**Cables y conductores de Cobre y de Aluminio,
de baja tensión hasta extra alta tensión**

**Accesorios de alta tensión
(Empalmes, Terminaciones, cajas)**



**ALUMINIUM
FLEXIBLE
CABLES**

Lightweight Cables
for Heavy Industries
in Extreme Conditions

Applications

- Tunneling, Heavy Industries
- Crane Reeling and Festoon Cables
- Conveyor systems and production lines,
- Machine and Plant Construction,
- Iron, steel and chemical industry,
- Wind Turbine Generators
- Heat and Power Plants
- Petrochemical & Mining Industries,
- Aircrafts, Railway Vehicles, Automobiles
- Transformer Stations
- Photovoltaic / Solar Systems
- Fixed&Flexible Installation

